

XTOOL

xTool Auto Streamline™ Conveyor



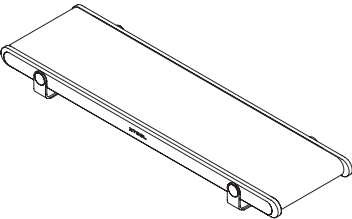
Quick Start Guide

Contents

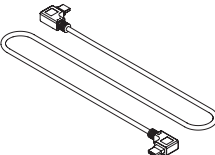
List of items	01
Install the conveyor on xTool F2 Ultra	02
Install the conveyor on xTool F1 Ultra	06
Process materials in batches	09
Process large materials	10

* The English version is the original instructions verified by the manufacturer.

List of items



Conveyor



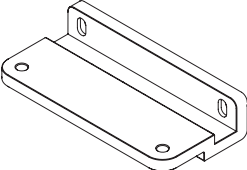
Connection cable



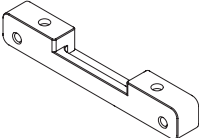
Quick Start Guide



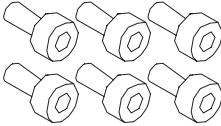
Safety Instructions



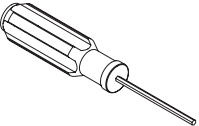
Fastening piece A



Fastening piece B

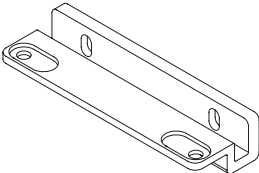


Screw M4*10

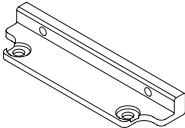


Screwdriver 3 mm

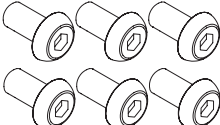
xTool F1 Ultra fastening kit



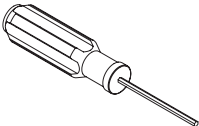
Fastening piece C



Fastening piece D



Screw M4*8

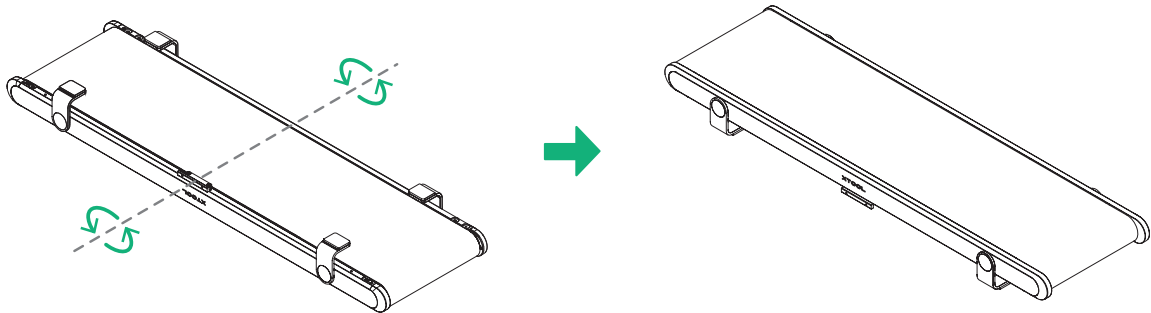
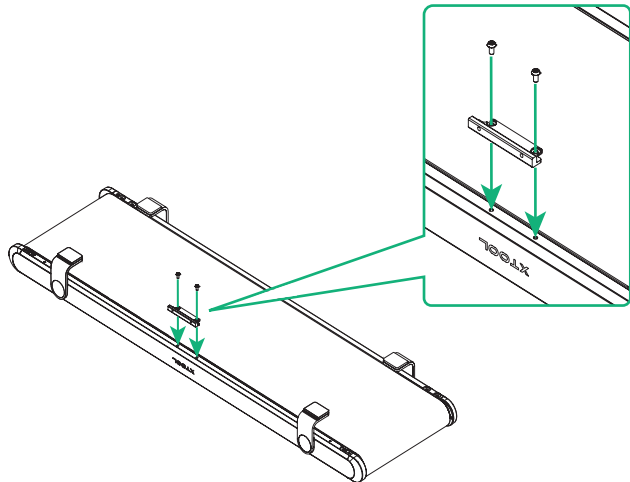
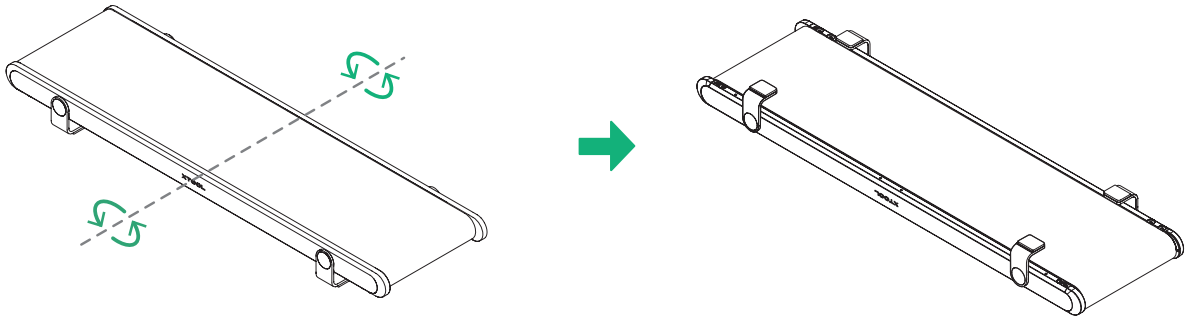
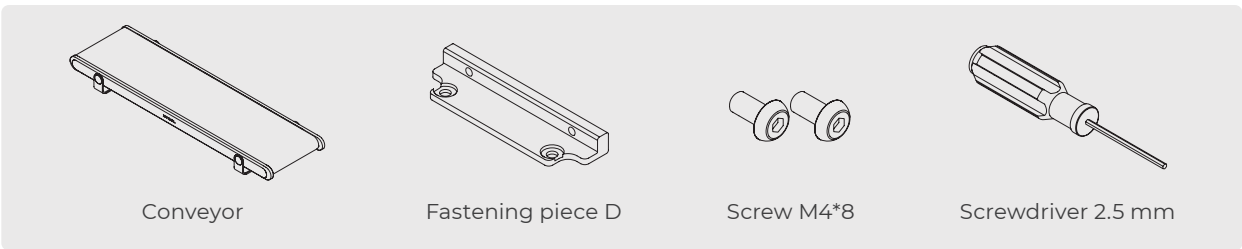


Screwdriver 2.5 mm

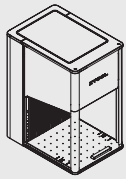
xTool F2 Ultra fastening kit

Install the conveyor on xTool F2 Ultra

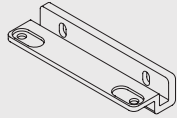
1



2



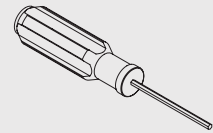
xTool F2 Ultra



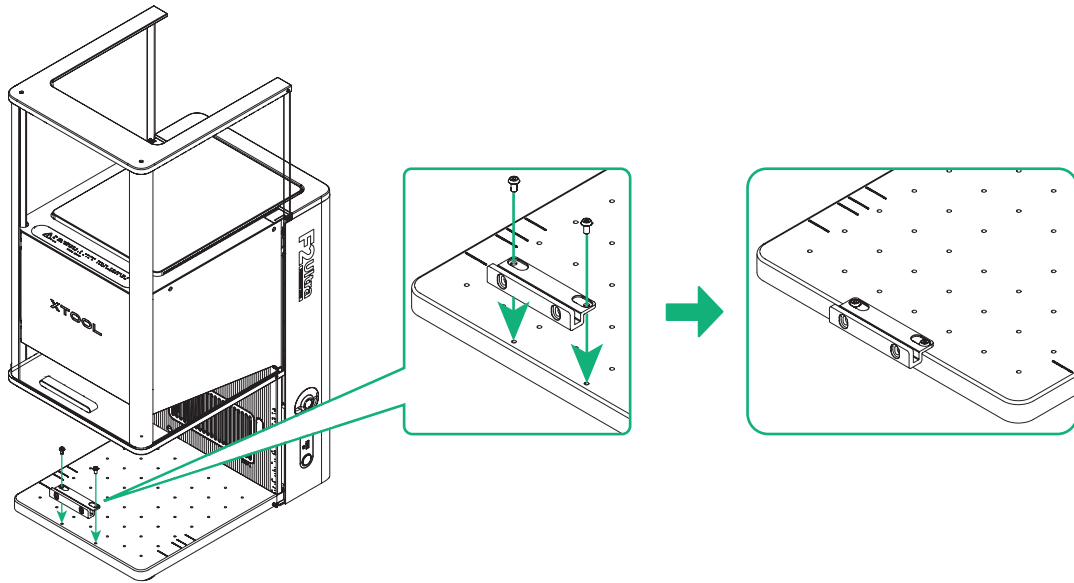
Fastening piece C



Screw M4*8



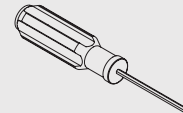
Screwdriver 2.5 mm



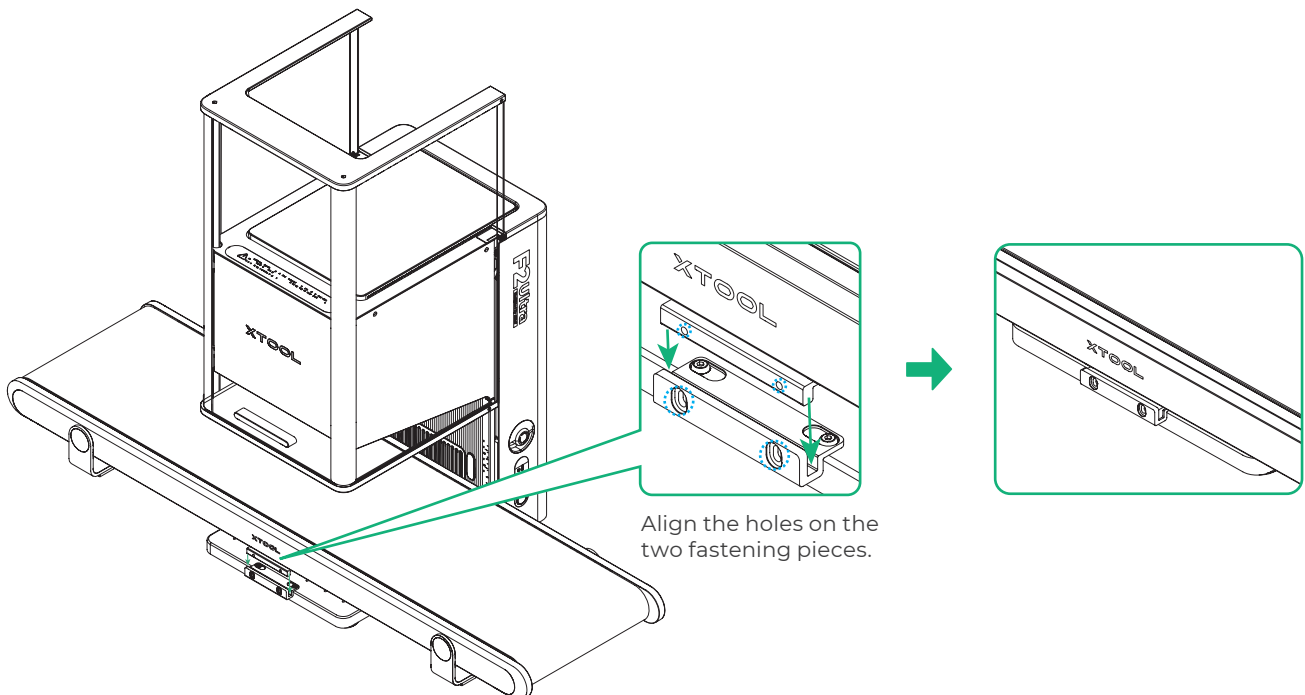
3

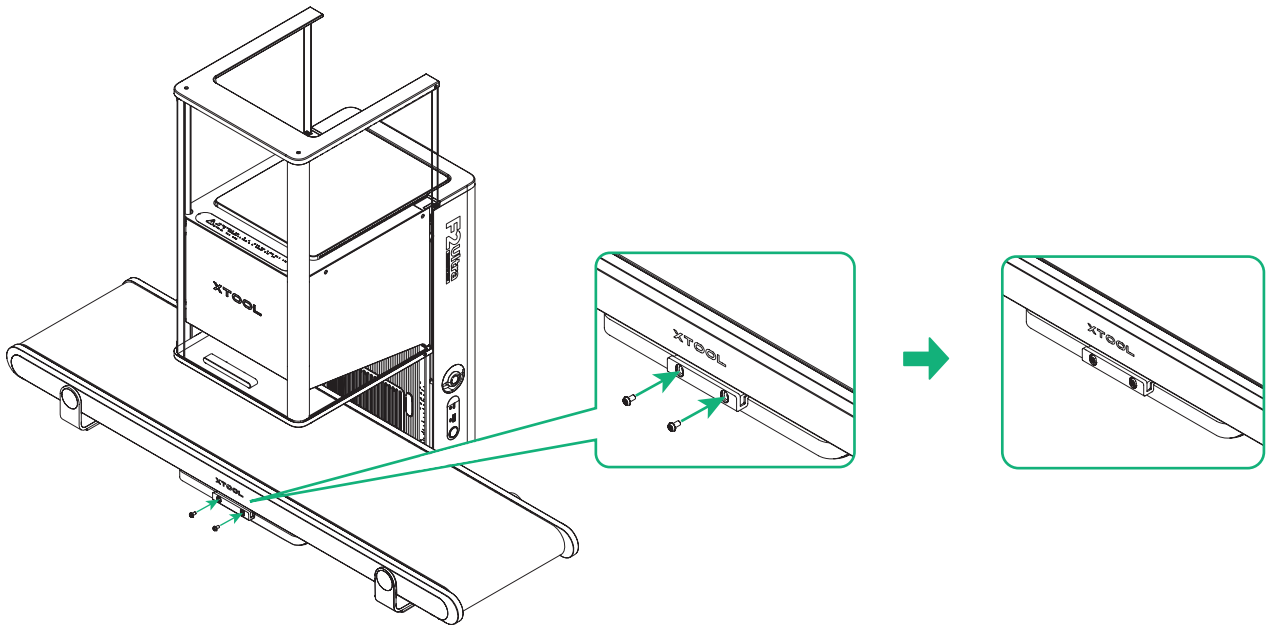


Screw M4*8

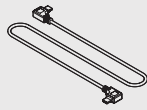


Screwdriver 2.5 mm

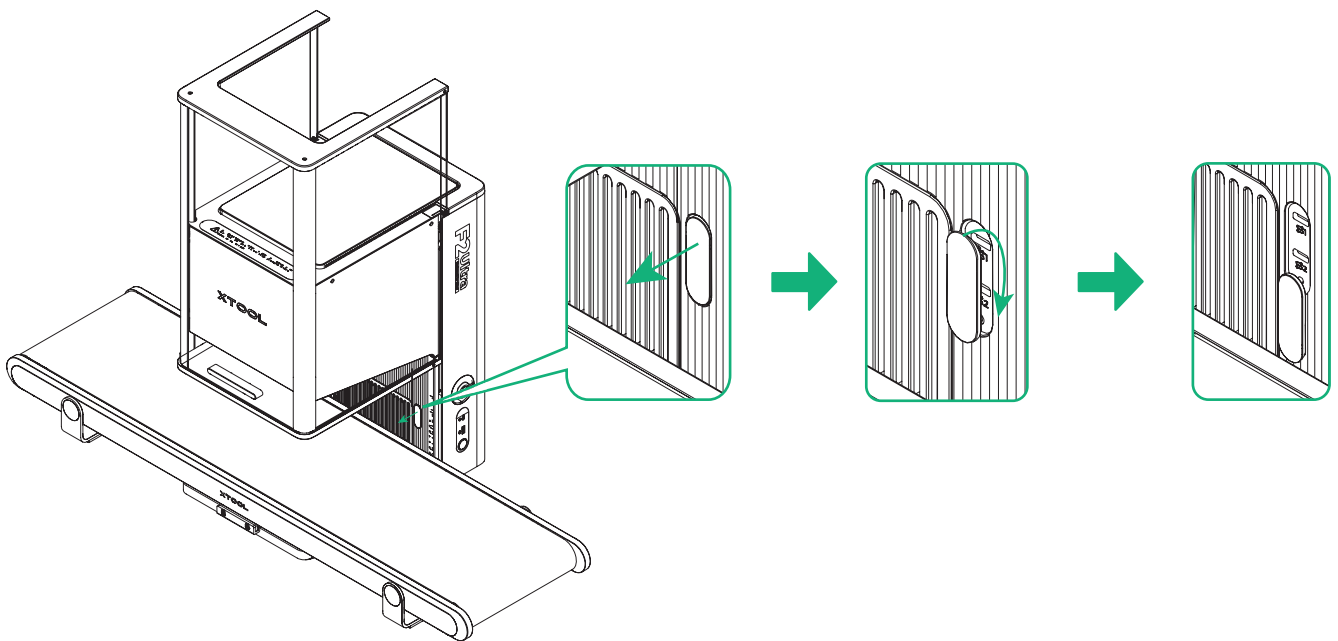


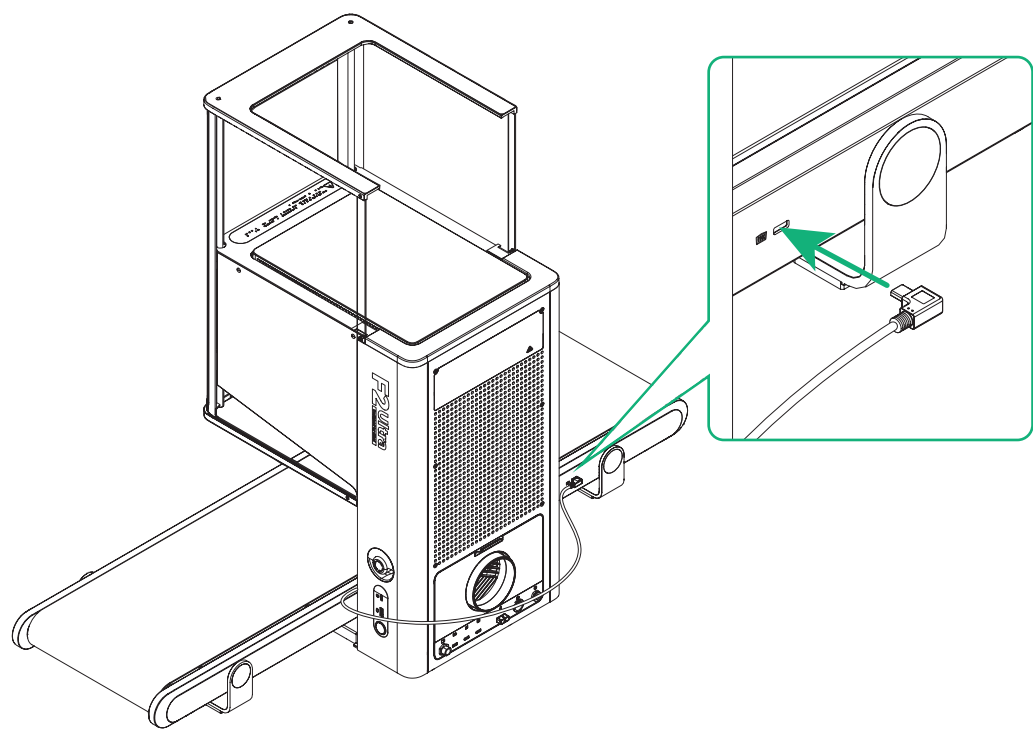
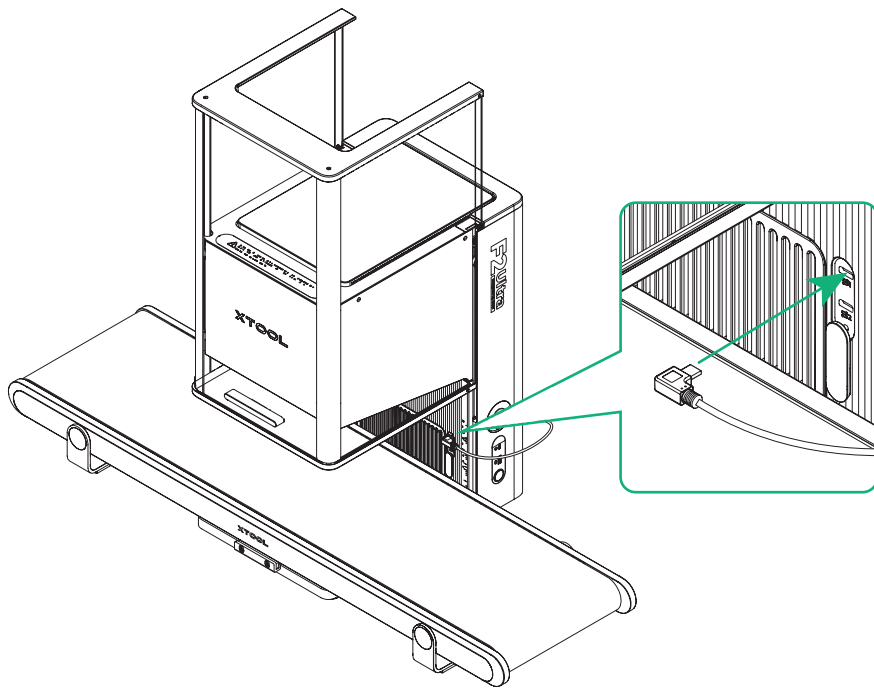


4



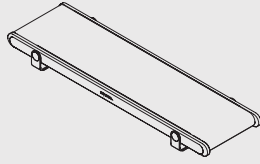
Connection cable



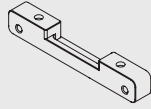


Install the conveyor on xTool F1 Ultra

1



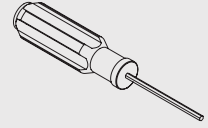
Conveyor



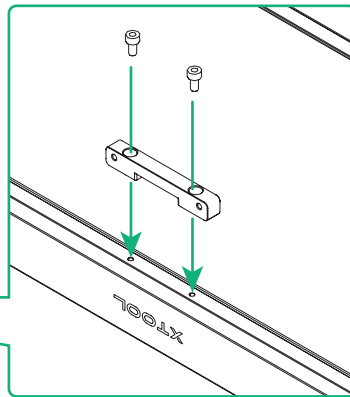
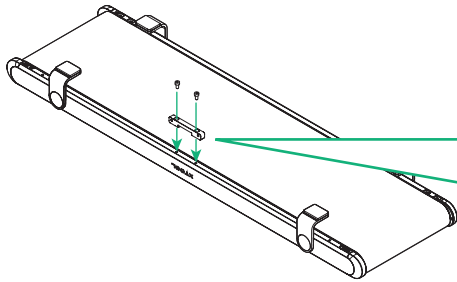
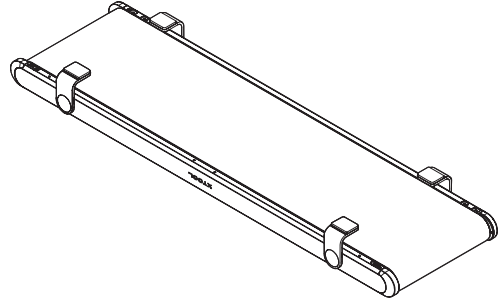
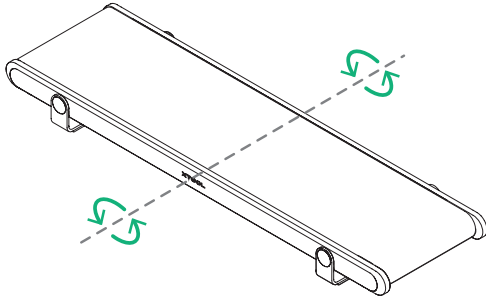
Fastening piece B



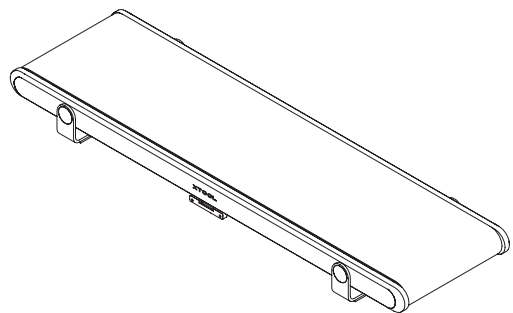
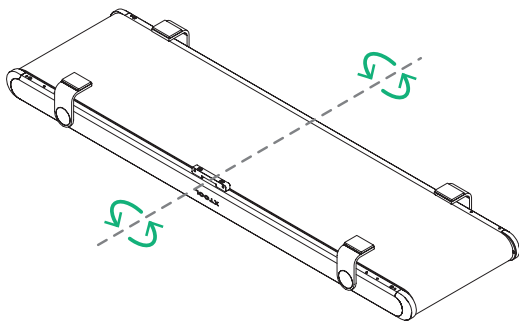
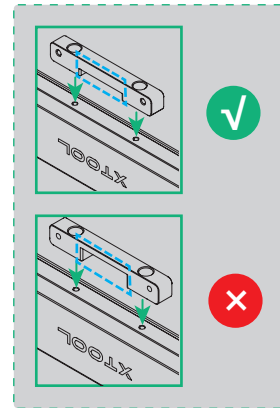
Screw M4*10



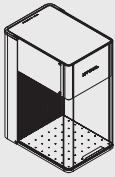
Screwdriver 3 mm



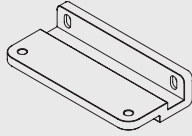
Place fastening piece B in the correct direction.



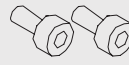
2



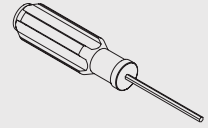
xTool F1 Ultra



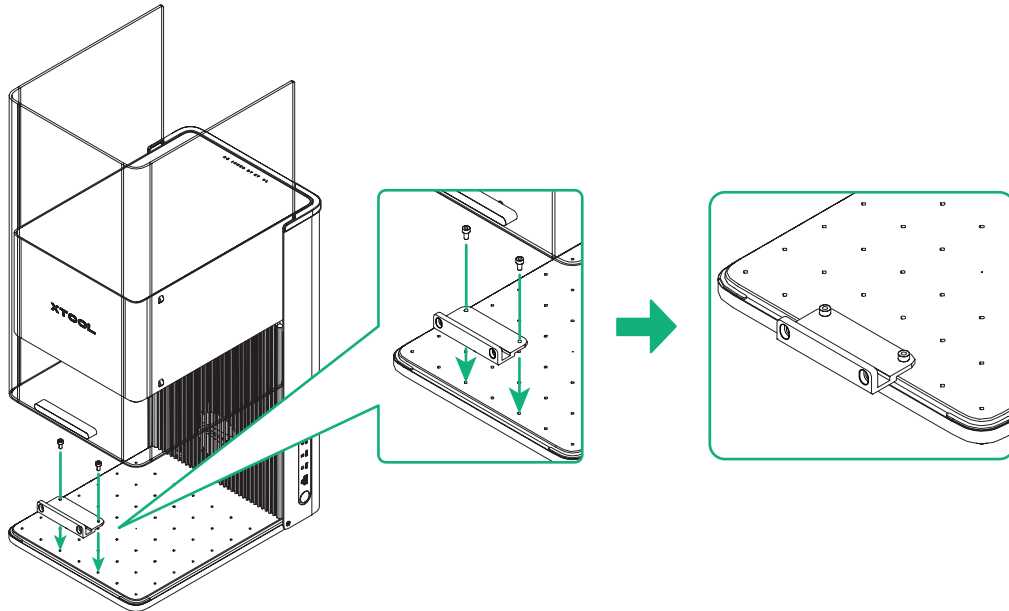
Fastening piece A



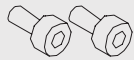
Screw M4*10



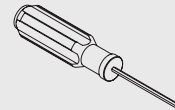
Screwdriver 3 mm



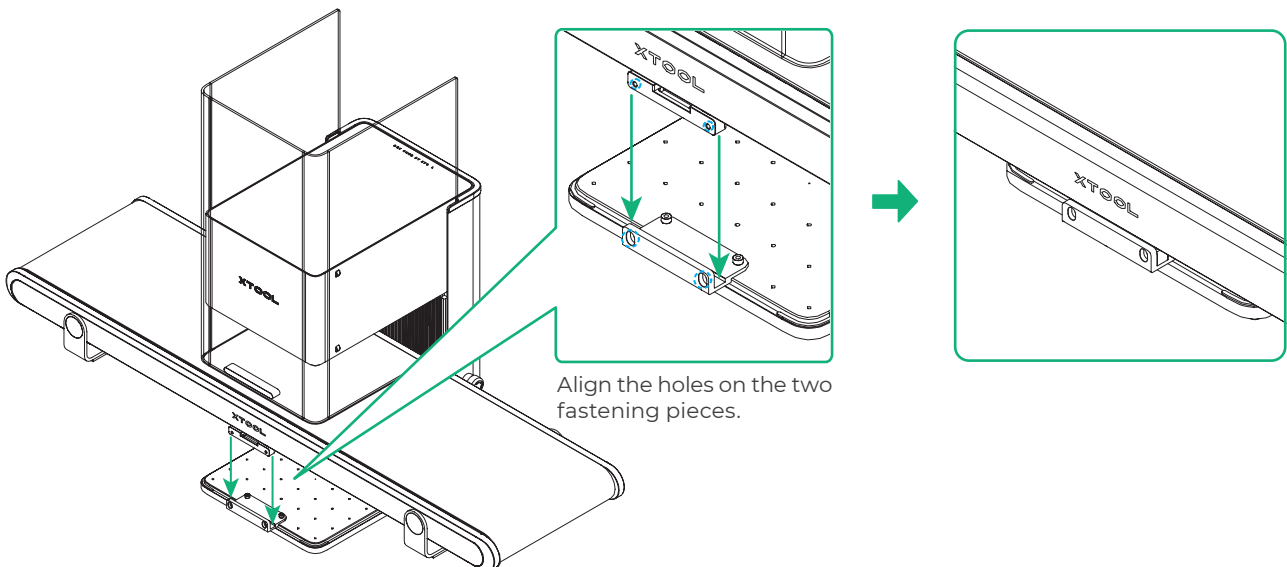
3

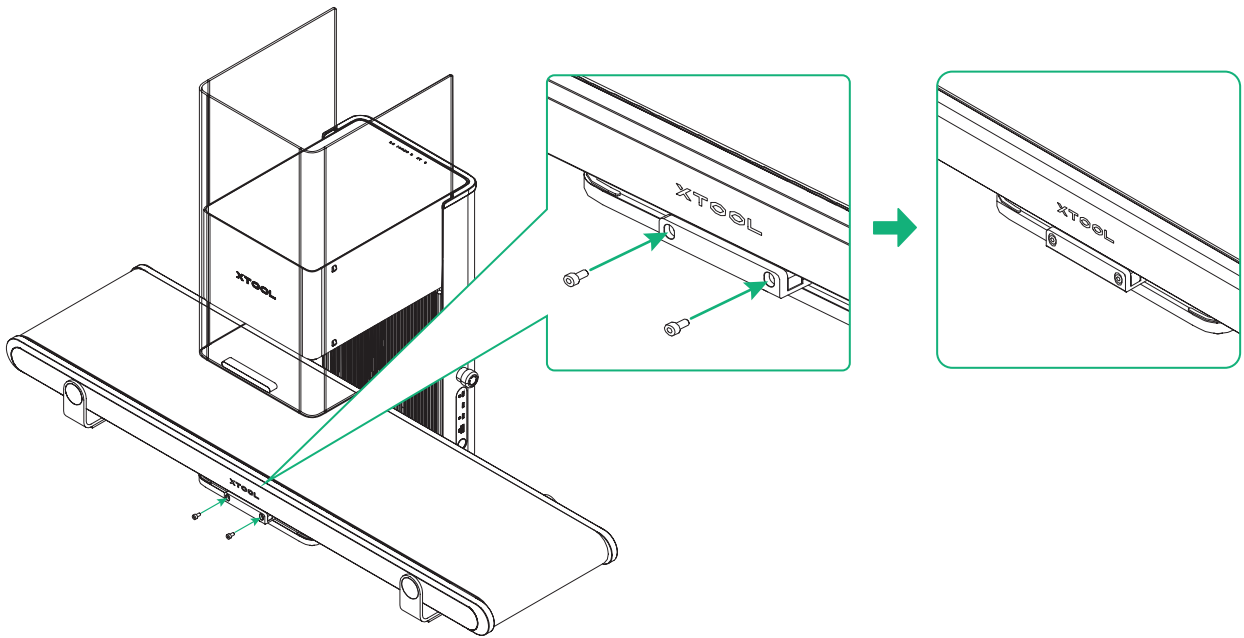


Screw M4*10

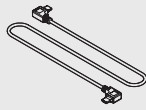


Screwdriver 3 mm

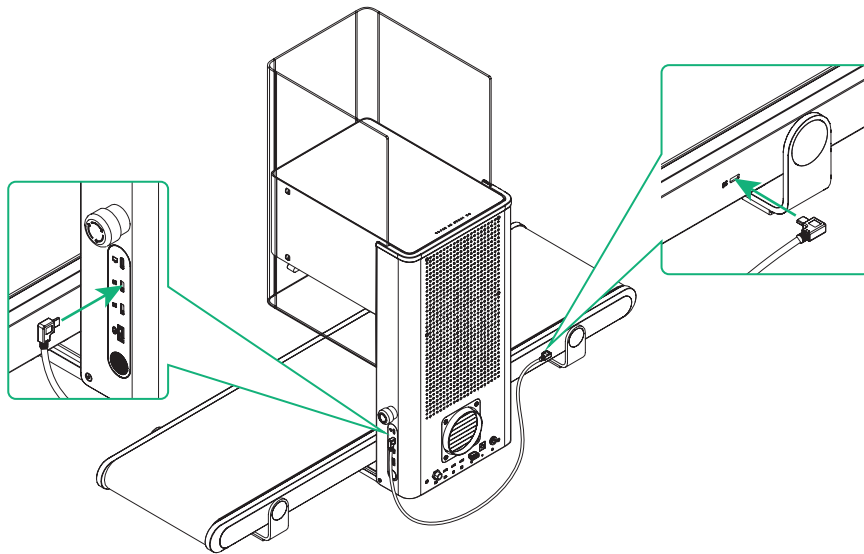




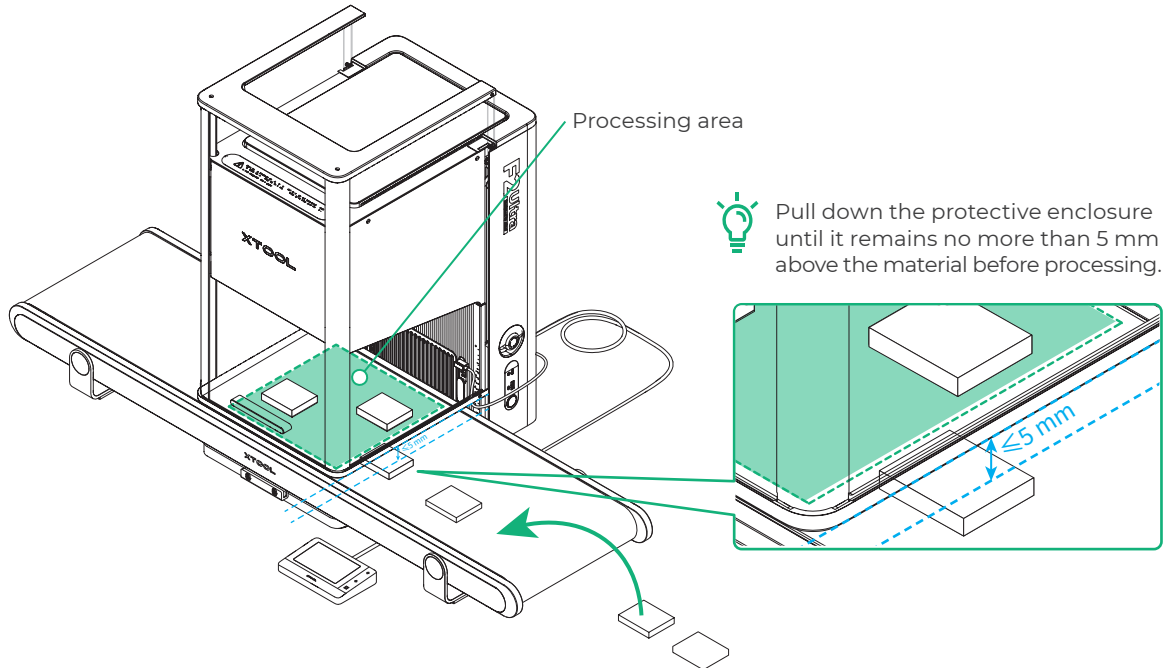
4



Connection cable



Process materials in batches

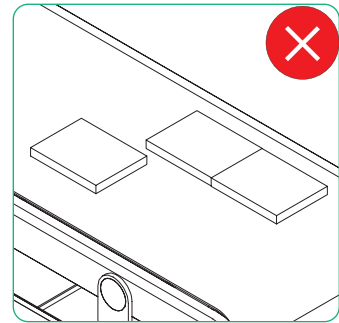
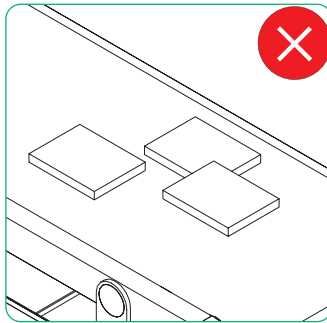
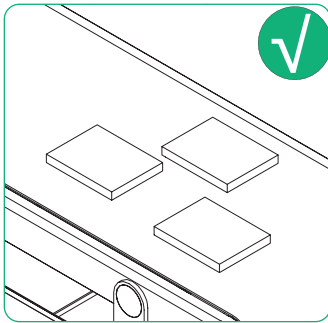


xTool F2 Ultra is used as an example. You can use the conveyor on xTool F1 Ultra in the same way.



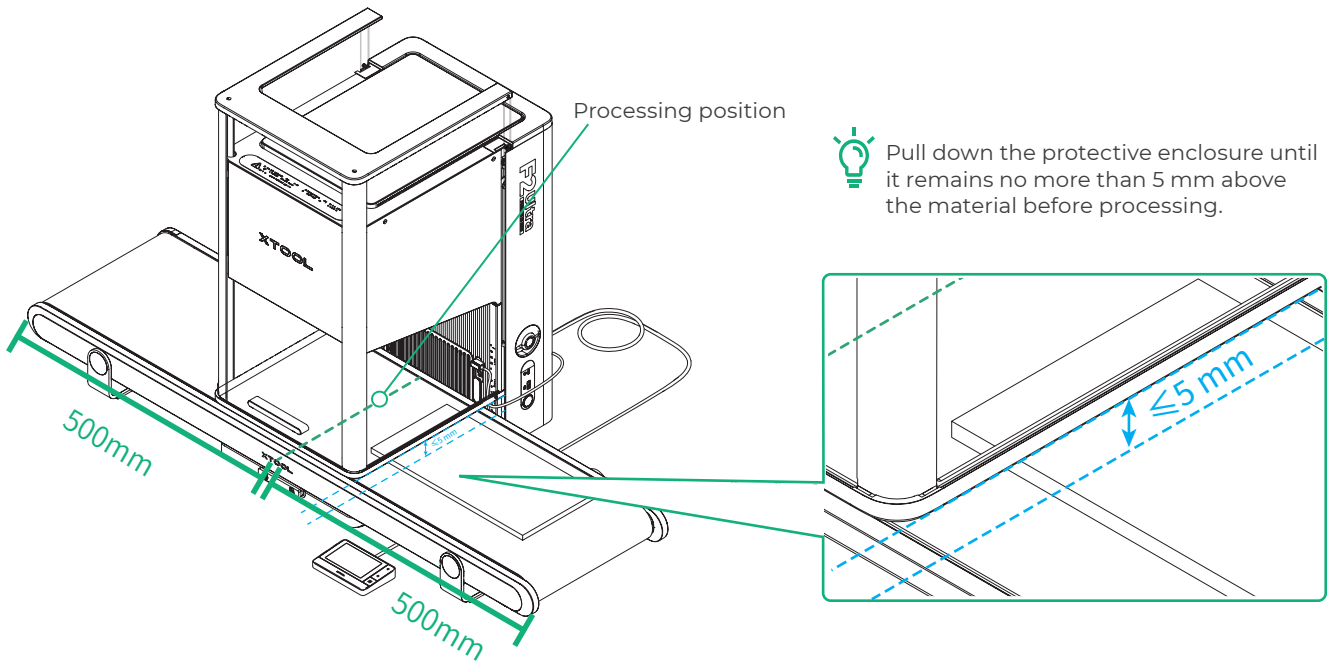
Ensure that you use identical materials.

When placing materials during processing, keep your hand away from the processing area to avoid skin injuries. Ensure that the materials do not touch or overlap with each other.



For details about how to use xTool F1 Ultra or xTool F2 Ultra with the conveyor for batch processing, visit support.xtool.com.

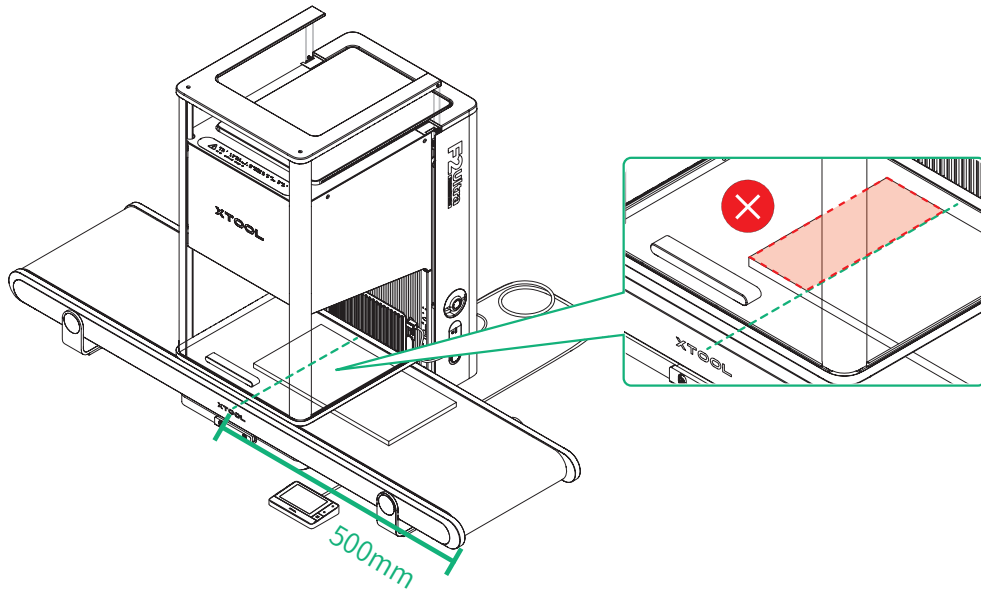
Process large materials



xTool F2 Ultra is used as an example. You can use the conveyor on xTool F1 Ultra in the same way.

! When processing large materials, the device directs laser beams solely onto the central line of the conveyor. As the material moves from right to left, any portion of the material on the left of this central line will not be processed.

Example:



For details about how to use xTool F1 Ultra or xTool F2 Ultra with the conveyor to process large materials, visit support.xtool.com.