

XTOOL | **OS1**

Automatic Shaker Oven Machine

Quick Start Guide



Contents

List of items	01
Meet your xTool OS1 Automatic Shaker Oven Machine	02
Install xTool OS1 Automatic Shaker Oven Machine and xTool Apparel Printer	03
Use xTool OS1 Automatic Shaker Oven Machine	13
FAQ	16
Indicator description	18

* The English version is the original instructions verified by the manufacturer.

List of items



① xTool OS1 Automatic Shaker Oven Machine



② Smoke exhaust pipe



③ Power cable



④ Data cable



⑤ xTool Selected Apparel Printer powder



⑥ Screw M5*50 (A spare screw is provided)



⑦ Double-end screwdriver



⑧ Spanner



⑨ Cleaning brush



⑩ Quick start guide

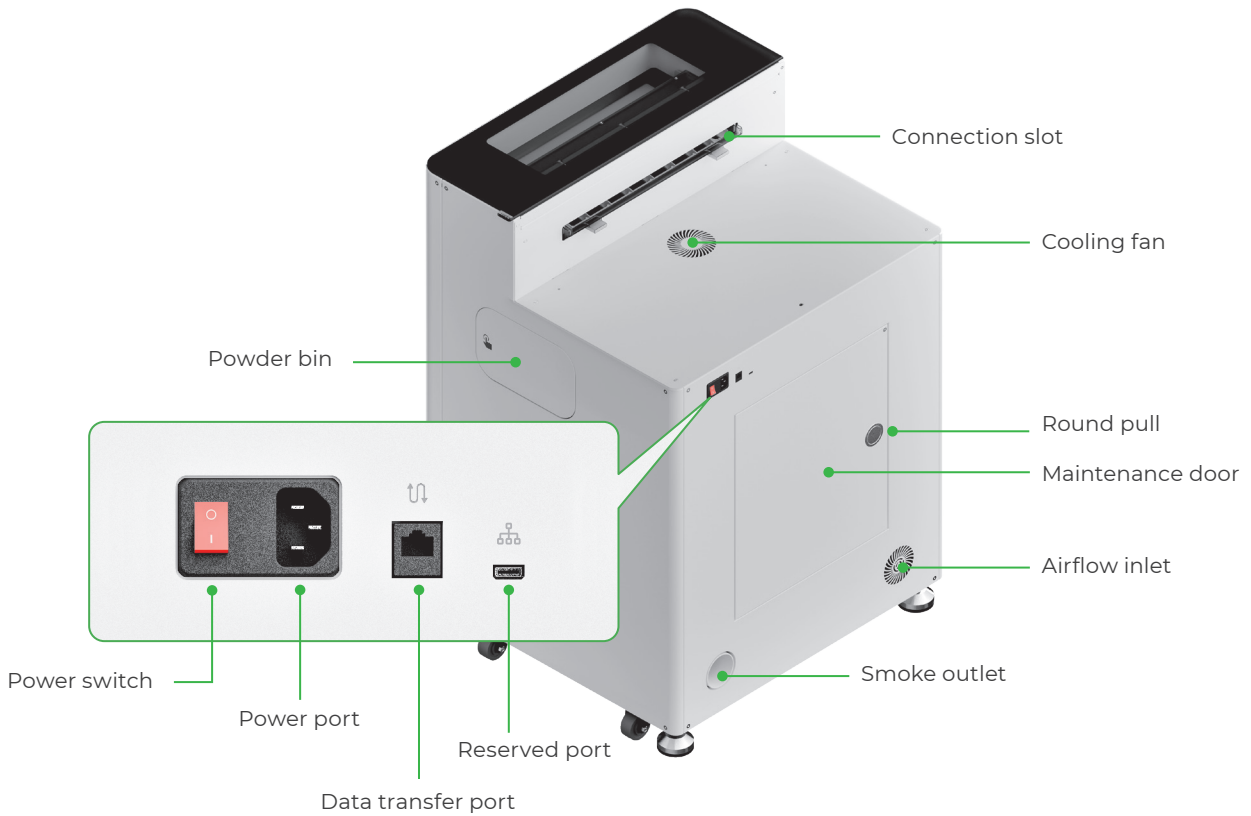
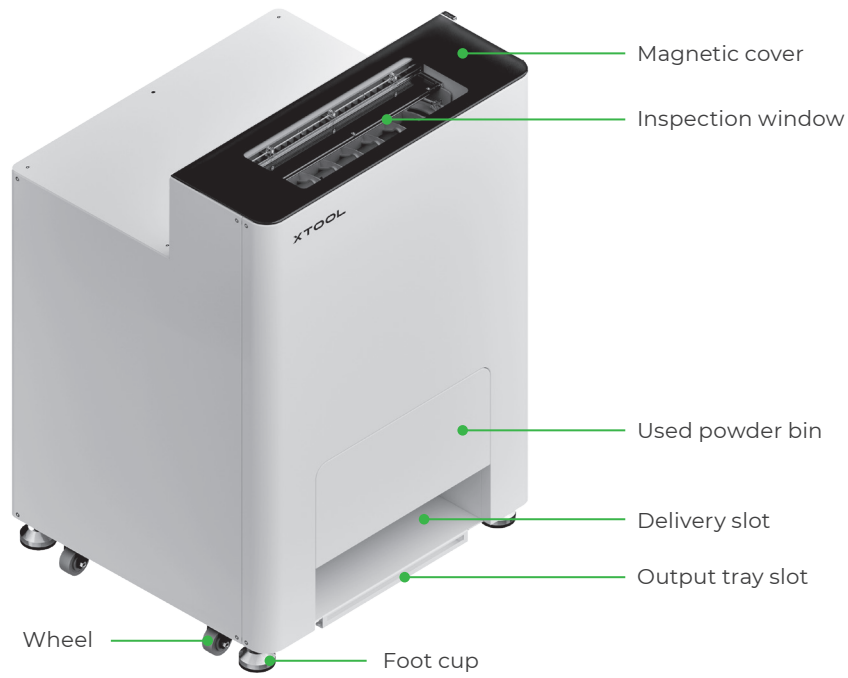


⑪ Safety instructions



The power cable may vary according to kits. The illustration is for reference only.

Meet your xTool OS1 Automatic Shaker Oven Machine

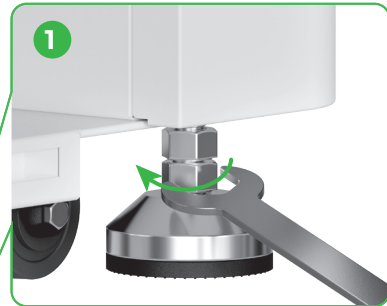
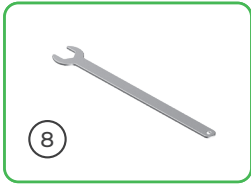


Install xTool OS1 Automatic Shaker Oven Machine and xTool Apparel Printer

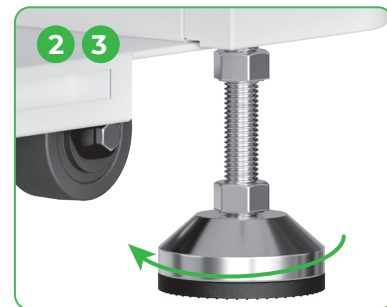
1 Secure xTool OS1

When you place xTool OS1, leave at least 1 m (40 inches) of space at the back and 90 cm (35 inches) of space on both sides for daily use and maintenance.

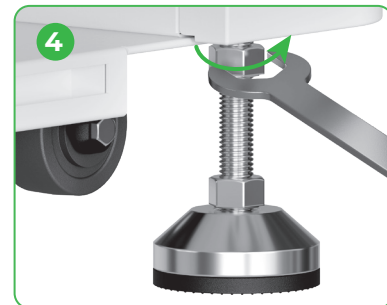




After the position of XTool OS1 is determined, ① unscrew the bottom nuts on the four foot cups with a spanner.



② Unscrew four foot cups with your hands until the foot cups touch the floor.
③ Keep unscrewing the foot cups until the wheels aside are off the floor.

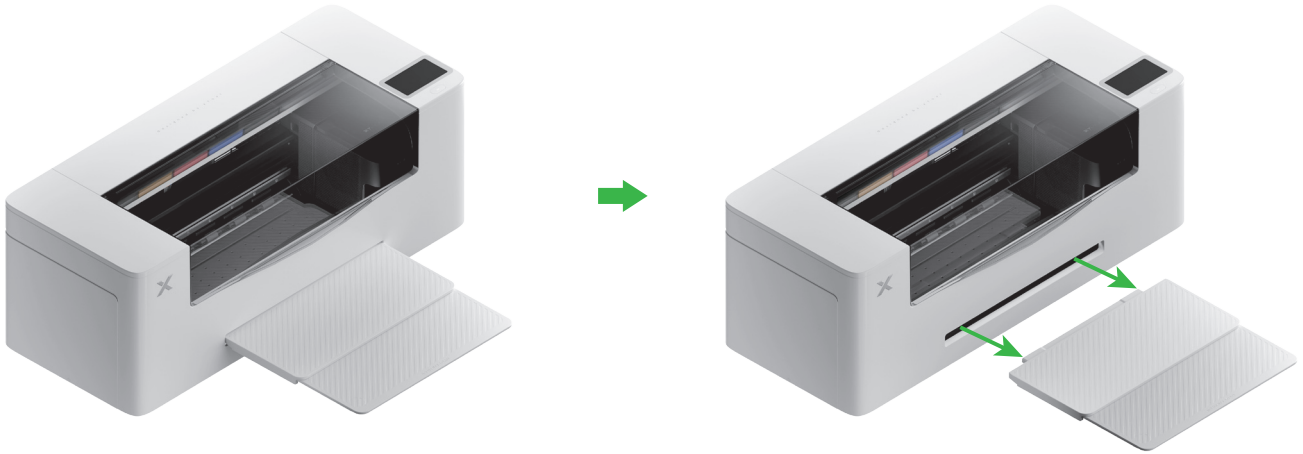


④ Screw the upper nuts on the four foot cups with a spanner.

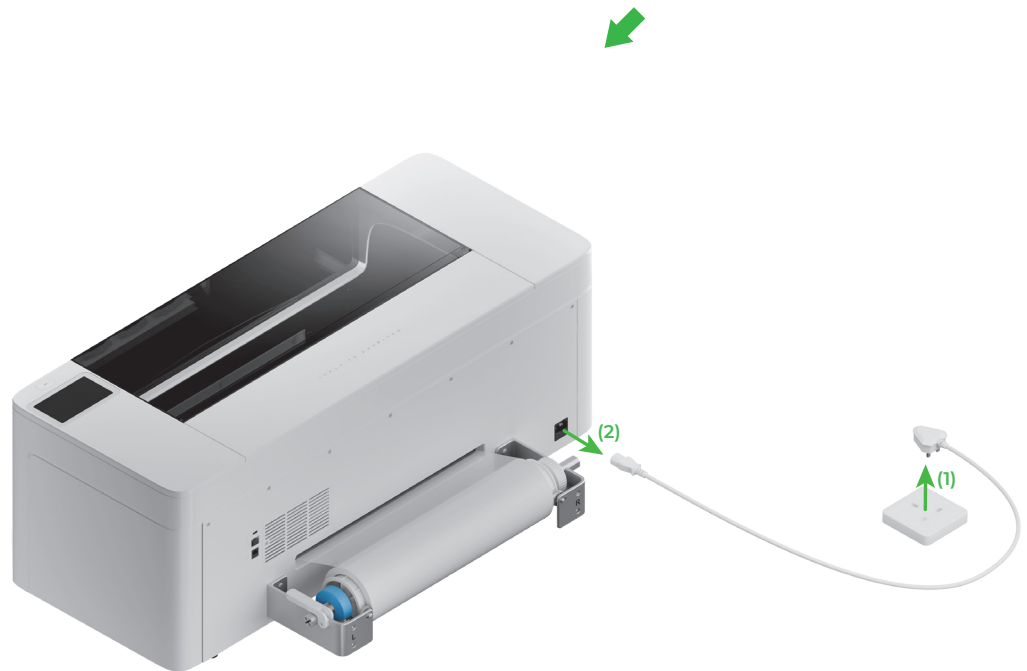


Go to support.xtool.com/article/1784 or scan the QR code to watch the tutorial video.

2 Place xTool Apparel Printer



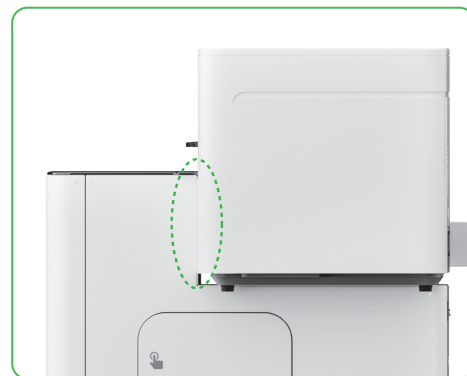
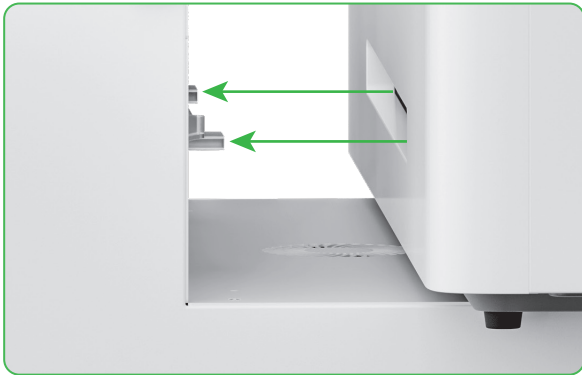
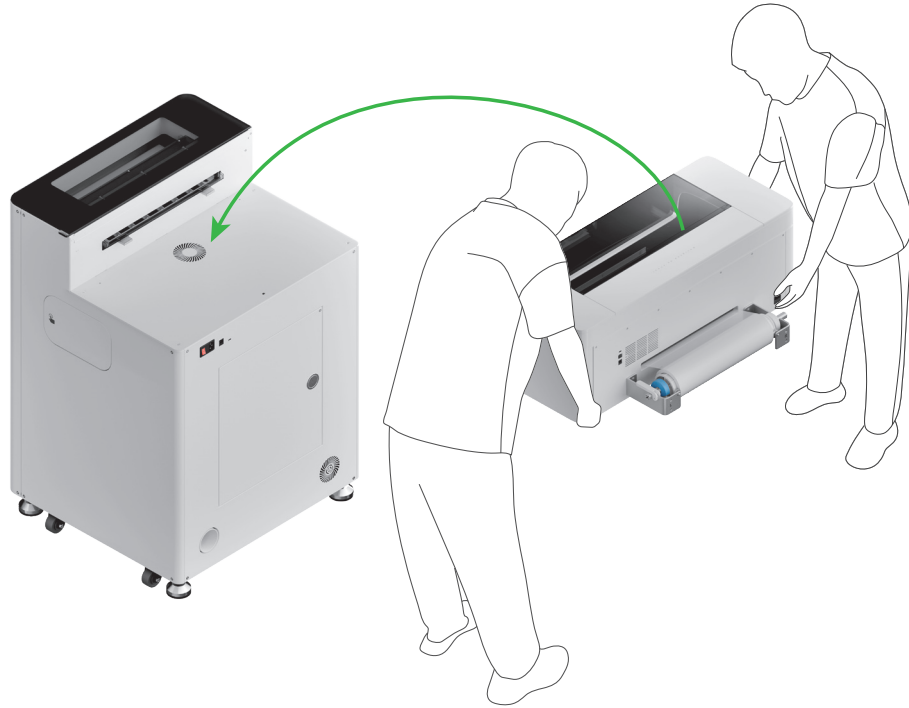
Remove the output tray



Disconnect the power supply

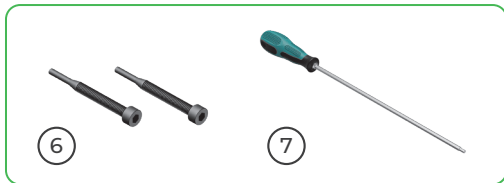


- To ensure your safety and avoid device damage, the printer should be moved by at least two adults. (The printer sold separately)
- Disconnect the power supply of the printer before moving the printer.
- Keep the printer parallel to the ground when moving it. Otherwise, the ink in the printer may spill out.



Align the printer's delivery slot with the xTool OS1's connection slot, and connect them together.

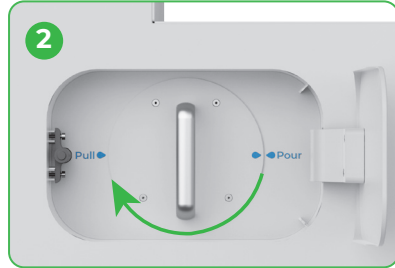
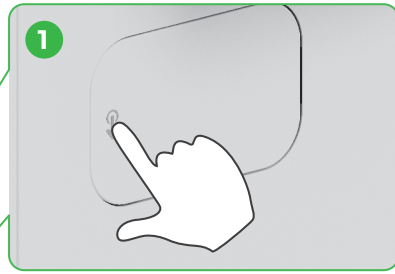
3 Secure xTool Apparel Printer and xTool OS1



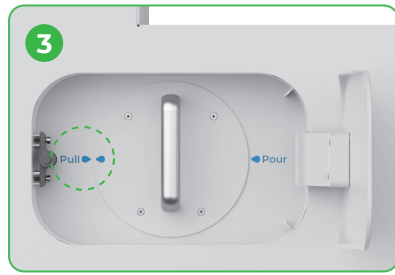
Install two screws in the holes, and tighten them.

4 Add the powder

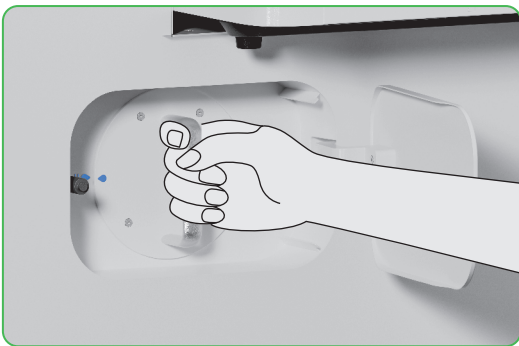
(1) Open the powder bin's door



Rotate the powder bin 180° clockwise



(2) Pull out the powder bin



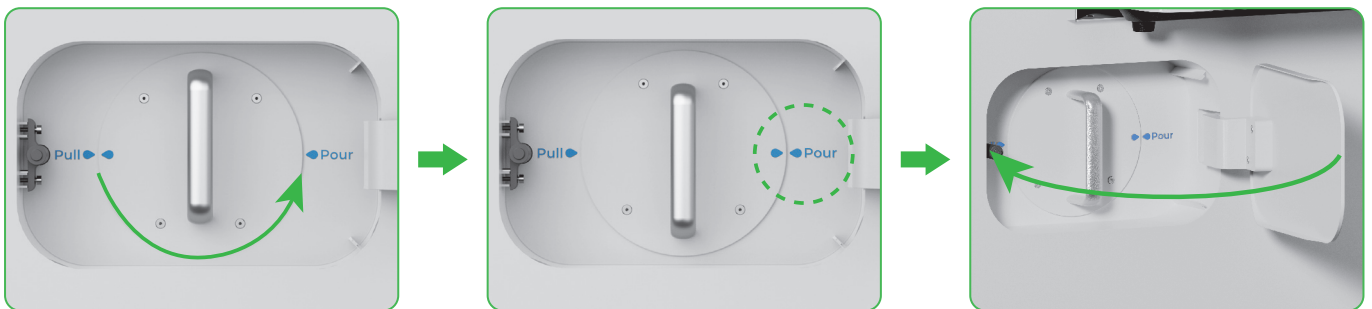
(3)



Pour the powder into the powder bin evenly, one pack at a time (The weight of the powder should be ≤ 1 kg).

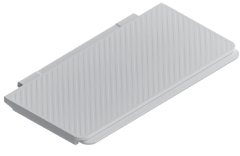


Make sure there are no foreign objects in the powder bin. If there are any, remove and dispose of them promptly.



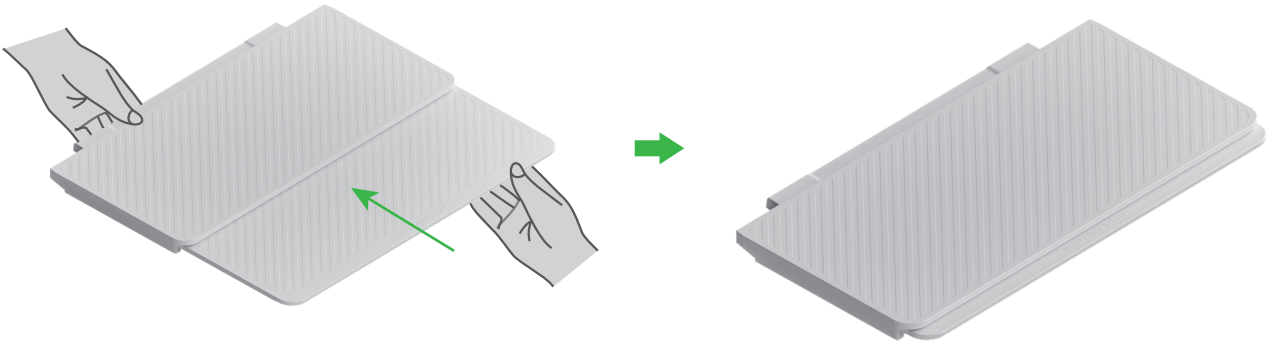
Rotate the powder bin 180° anticlockwise to pour the powder into xTool OS1.

5 Install the output tray

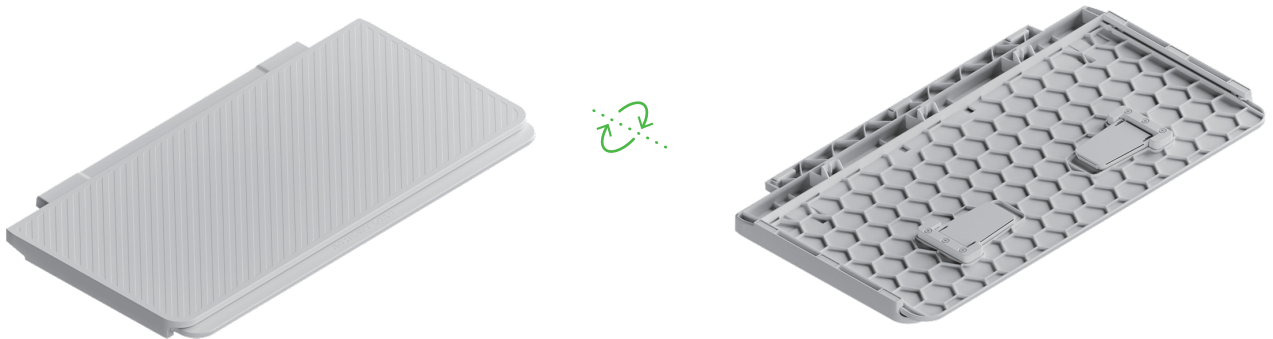


Get the item from the pack of the printer.

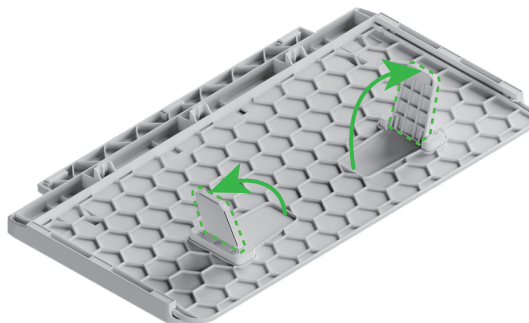
1

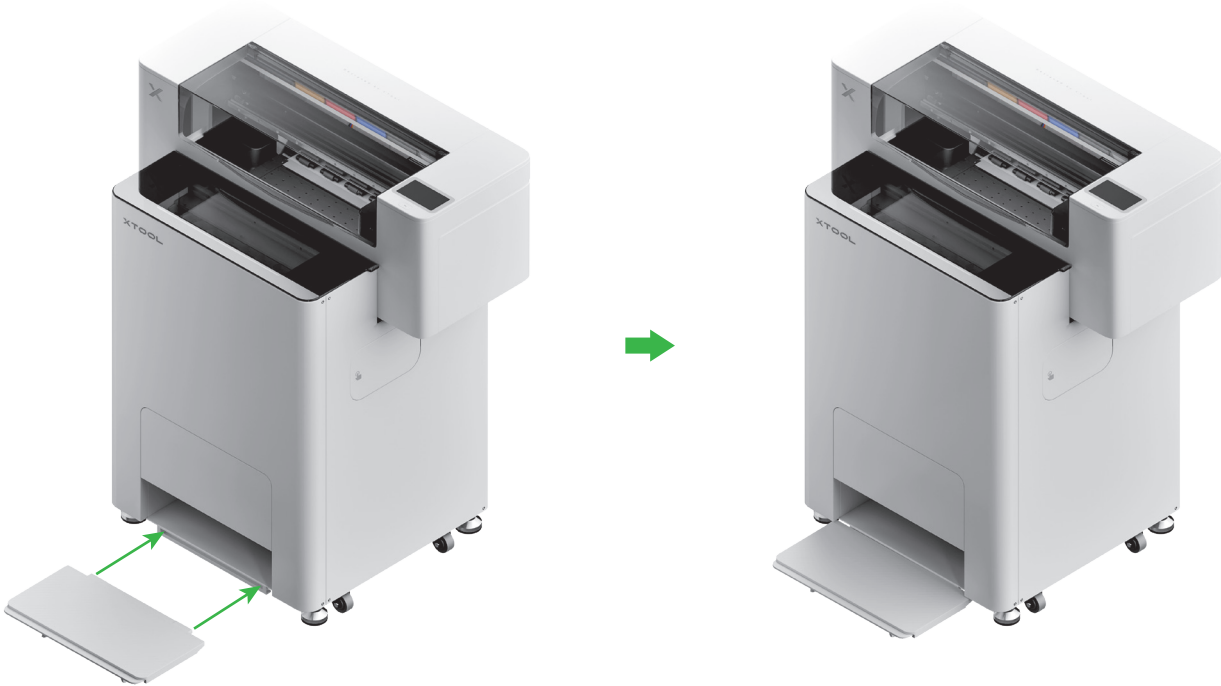


2

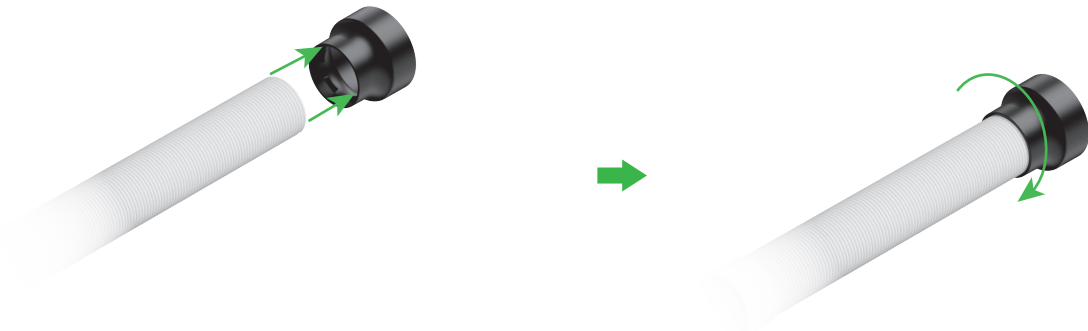
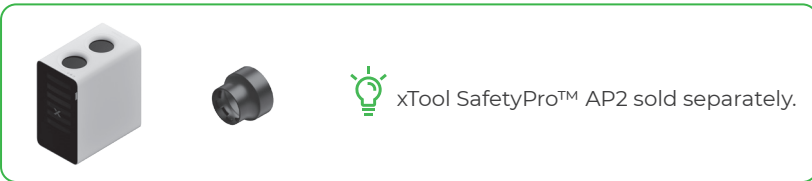
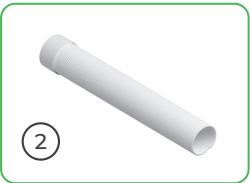


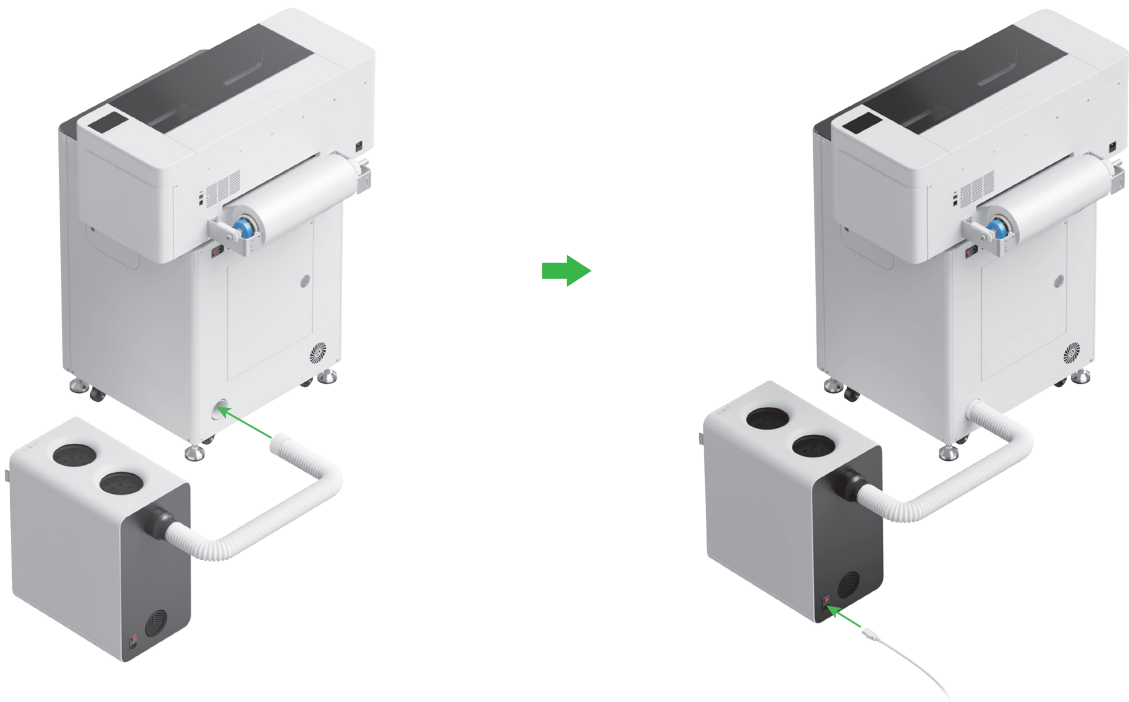
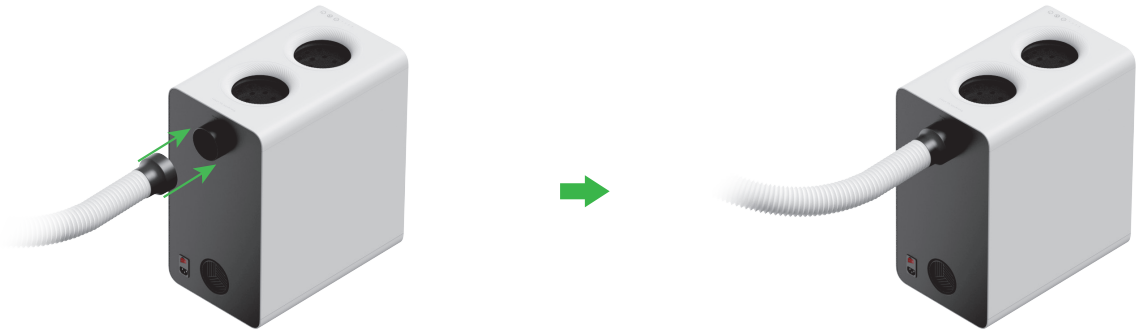
3





6 Connect xTool OS1 to xTool SafetyPro™ AP2

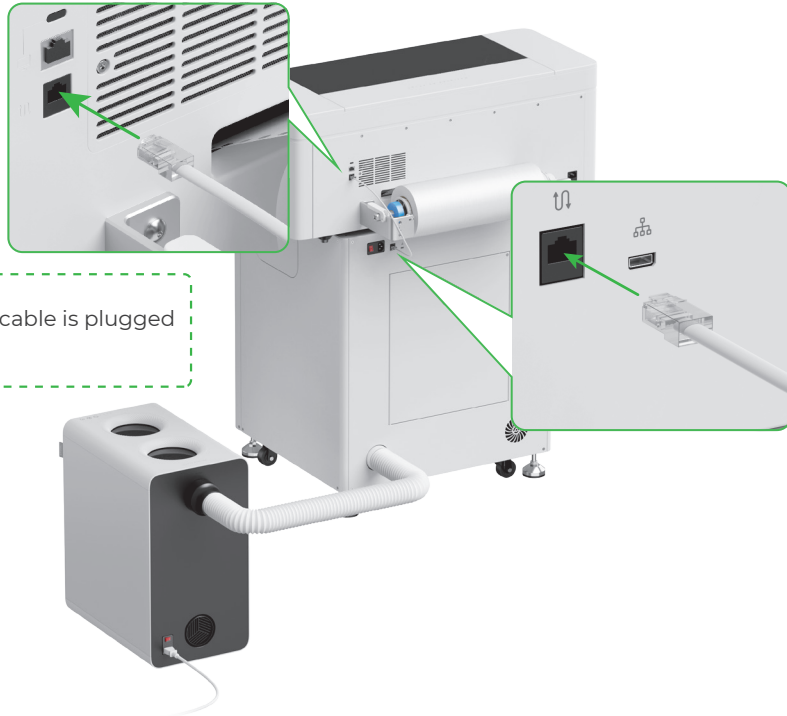
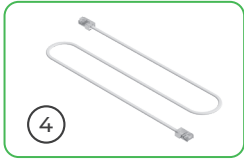




Stretch the smoke exhaust pipe as long as it will go when connecting it to xTool SafetyPro™ AP2.

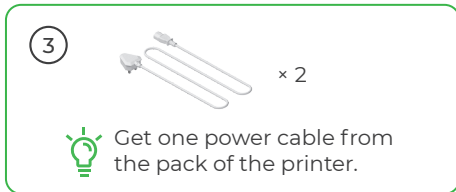
Use xTool OS1 Automatic Shaker Oven Machine

1 Connect xTool OS1 to xTool Apparel Printer

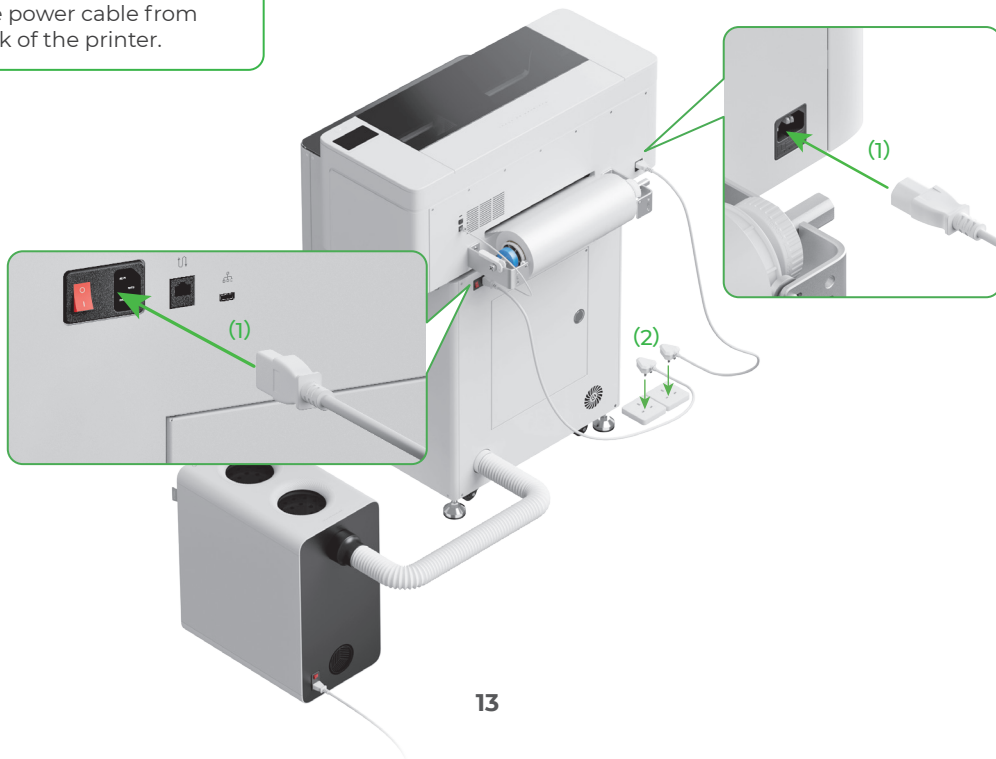


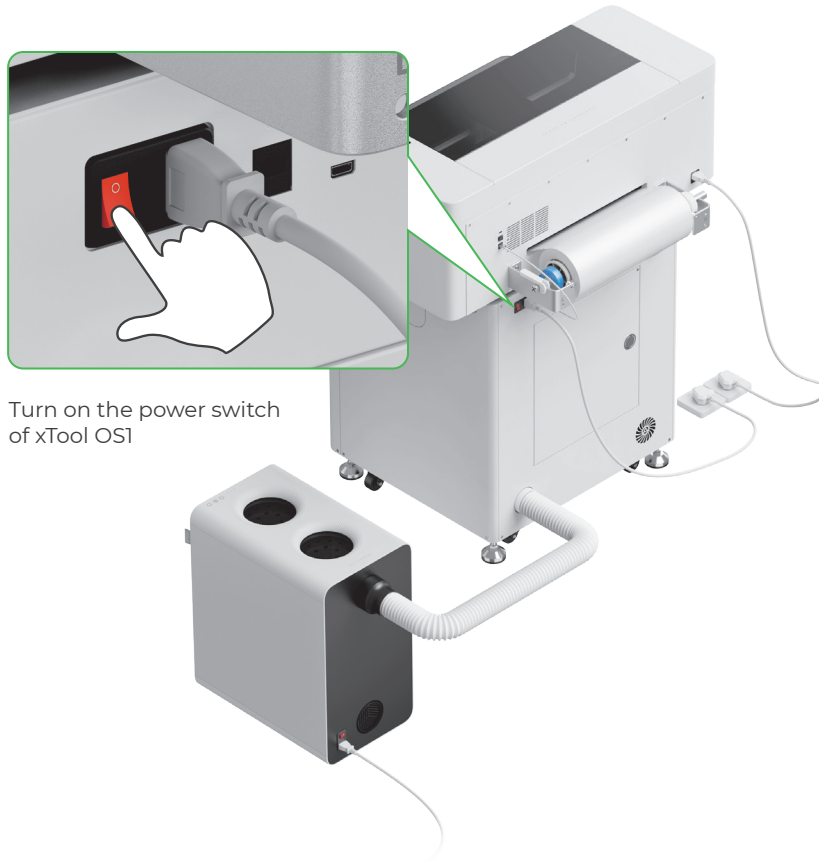
Make sure one end of the data cable is plugged into the bottom port.

2 Connect to a power supply



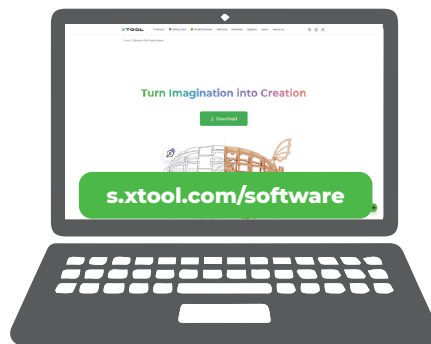
To ensure the normal functioning and maintenance of the printer, do not disconnect the power supply of it.





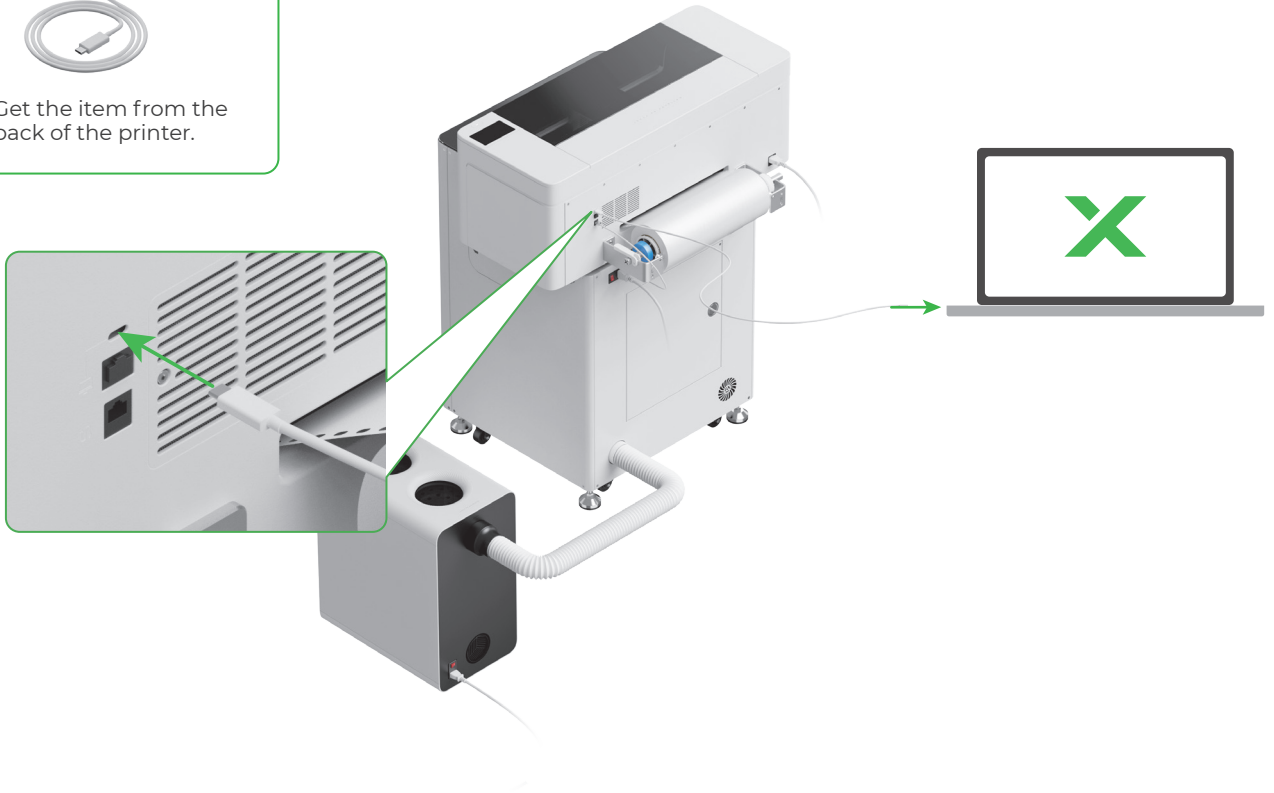
Turn on the power switch of xTool OS1

3 Get the software



Go to s.xtool.com/software to get the xTool software.

4 Connect xTool Apparel Printer to a computer



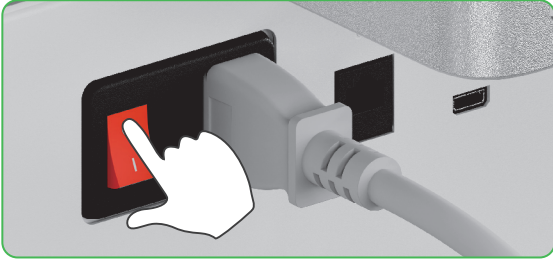
For details about how to use the software to operate xTool Apparel Printer and xTool OS1, scan the QR code or visit support.xtool.com/article/1785.



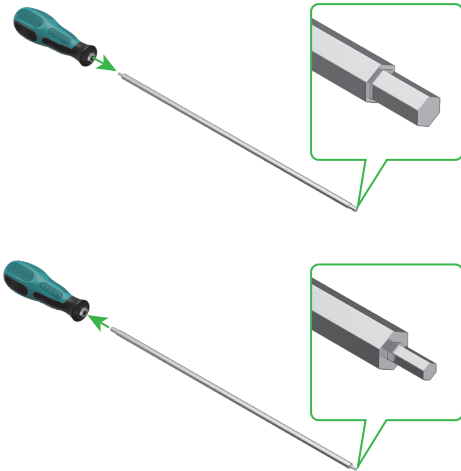
FAQ

1. I want to open the maintenance door. What can I do?

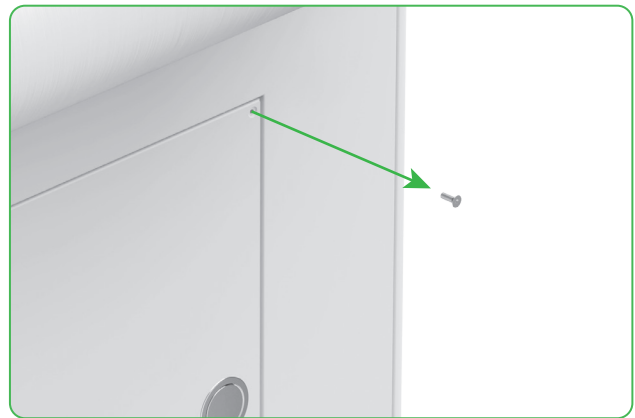
(1) Turn off the power switch of xTool OS1



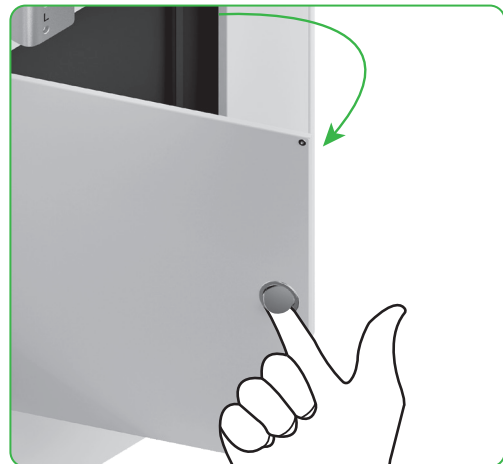
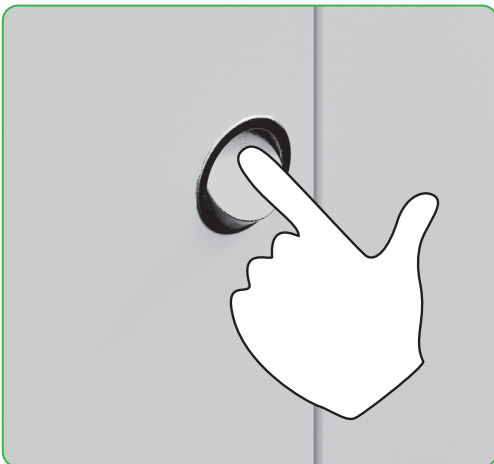
(2) Unscrew the screw of the maintenance door



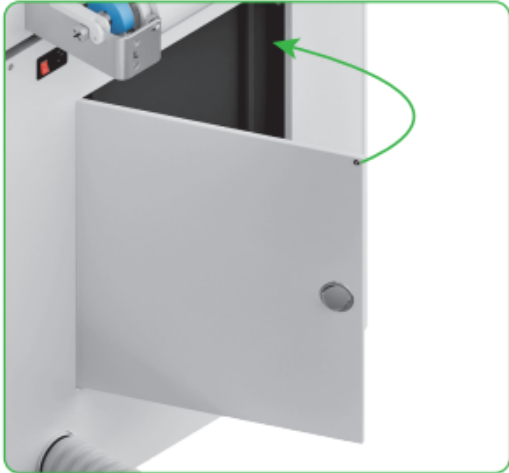
Use the narrow end of the screwdriver



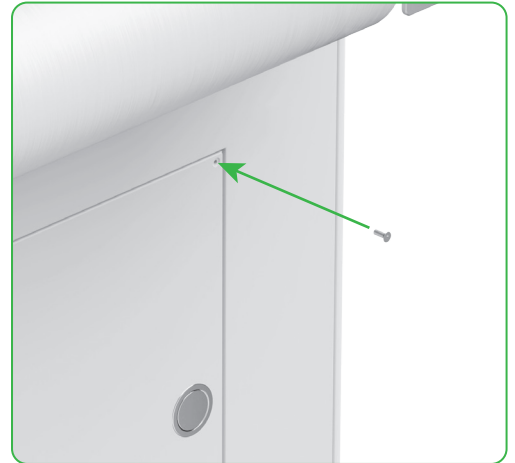
(3) Press the round pull and open the maintenance door



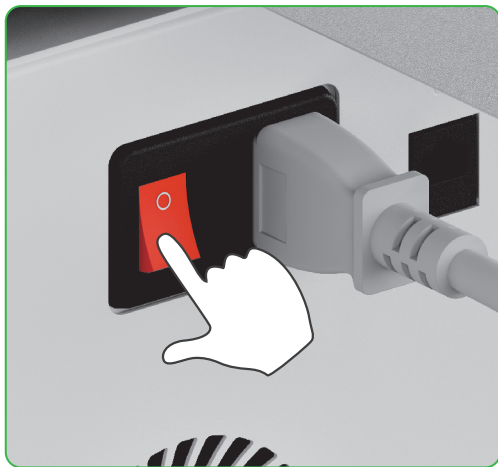
(4) Close the maintenance door after using



(5) Tighten the screw



(6) Turn on the power switch



2. How does xTool SafetyPro™ AP2 work with xTool OS1?

Go to support.xtool.com/article/1646 or scan the QR code to read the article.



Indicator description



Button indicator	Status indicator	Speaker	Device status
Solid white	Solid white	/	Idle
Going off	Going off	/	Standby
Solid white	Solid green	/	Printing
Solid white	Solid green	Sounding once	Printing paused
Solid white	Blinking purple slowly	Sounding once	Firmware update
Solid white	Blinking purple slowly	Sounding once	Calibrate the print head
Solid white	Blinking purple slowly	Sounding once	Clean the print head
Solid white	Blinking red rapidly	Sounding once	Exception occurs